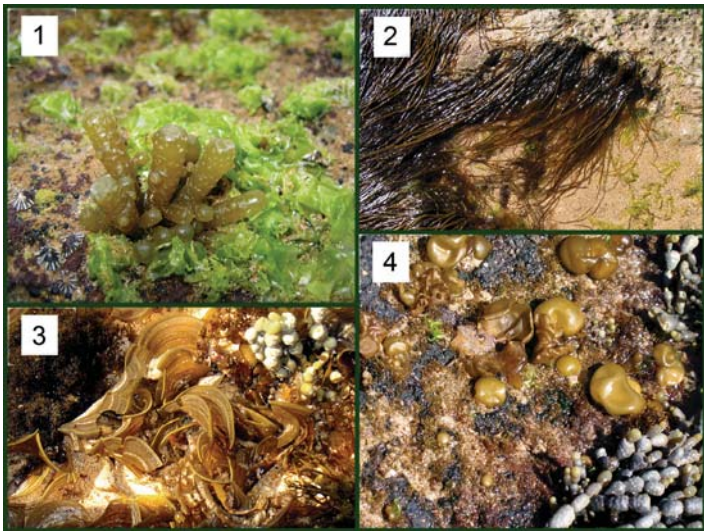


# Brown Algae

(Phylum: *Heterokontophyta*)



About 240 of Brown Algae species are found in southern Australia ranging from massive kelps to tiny tufted species growing attached to larger plants.

With additional light absorbing brown pigments in their cells brown algae can live at greater depths than green algae. These pigments often mask what would otherwise be green plants.

	Name	Description
1	<i>Splachnidium rugosum</i>	Growing intertidally, this gelatinous filled plant is more conspicuous during the warmer months.
2	<i>Scytosiphon lomentaria</i>	The unbranched fronds of this hair like algae are most conspicuous during cooler months growing both intertidally and sub-tidally.
3	<i>Padina fraseri</i>	Part of a largely tropical group of partially calcified algae this species forms tough flat fan shaped fronds around rockpools.
4	<i>Colpomenia sinuosa</i>	The most common of the globular Brown Algae this species grows intertidally and subtidally, and is more common in warmer months.