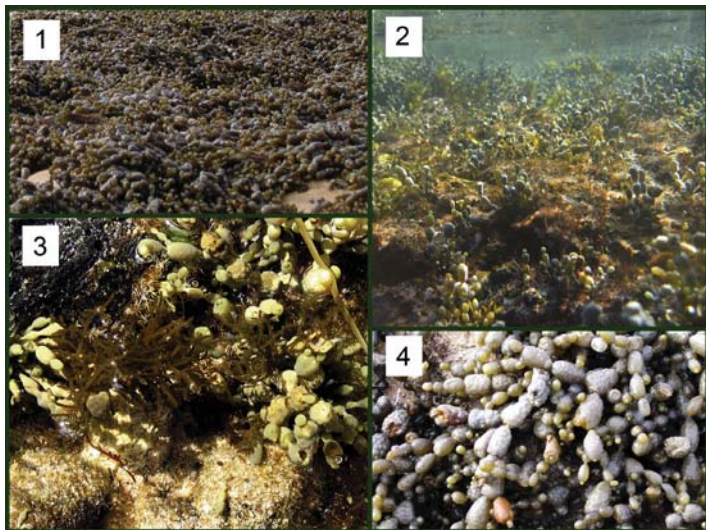


Brown Algae

(Phylum: *Heterokontophyta*)



The Brown Algae are the most conspicuous algae found in the mid to lower intertidal zone and larger rockpools as well as forming extensive *kelp forests* offshore.

Intertidal brown algae must cope with exposure to the air at low tide. Neptune's Necklace, with its small bead-like blades, stores water, allowing it to survive between the tides. It is vulnerable to trampling by eager visitors so please watch your feet!

	Name	Description
1	<i>Hormosira banksii</i> Neptune's Necklace	The most obvious of the intertidal algae at the Bluff this species forms a living carpet over many areas of the rock platform.
2	<i>Hormosira banksii</i> Neptune's Necklace	These beds of Neptune's Necklace provide important shelter for many grazing and scavenging animals.
3	<i>Notheia anomala</i>	Growing only attached to <i>Hormosira banksii</i> or to itself, each "branch" is a separate plant of this unusual algae.
4	<i>Hormosira banksii</i> Neptune's Necklace	Everybody's favourite seaweed! The distinctive string of beads makes this alga the easiest to identify.