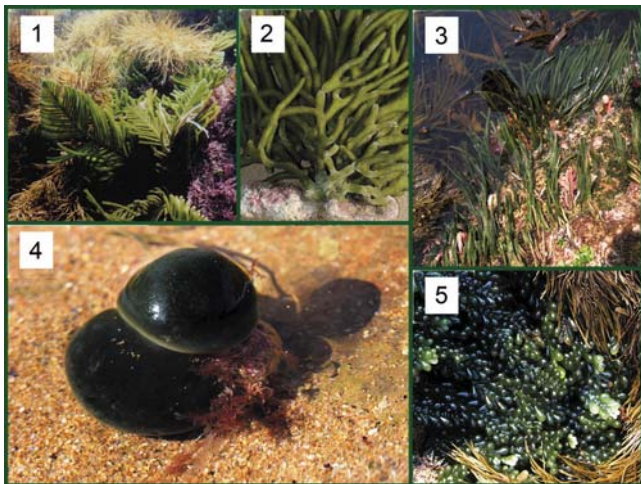


Green Algae

(Phylum: Chlorophyta)



The genera *Caulerpa* and *Codium* are some of the most diverse of the Green Algae found at the Bluff and come in many forms in rockpools and along the edge of the reef. All *Caulerpa* species are recognised by having creeping *stolons* that grip the sand or rock, and having erect stems of different shapes. All occur sub-tidally or in rockpools.

	Name	Description
1	<i>Caulerpa flexilis</i> (to 300 mm)	This "conifer-like" erect <i>Caulerpa</i> is common on the edge of pools in wave exposed areas of the Bluff.
2	<i>Codium fragile</i> Dead Man's Fingers	This dark green mop-like alga has regularly forked cylindrical branches and grows in shallow sections of the reef platform.
3	<i>Caulerpa brownii</i> (to 400 mm)	Forming moss like textures in deeper pools exposed to waves this erect green alga has dense, unbranched thin fronds.
4	<i>Codium pomoides</i> Sea Apple	Resembling an apple in shape, this firm semi-spherical alga grows on the edge of shaded rockpools and subtidally.
5	<i>Caulerpa cactoides</i> (to 400 mm)	Succulent-like in appearance this species is also common in sheltered areas of rockpools and the reef edge.